

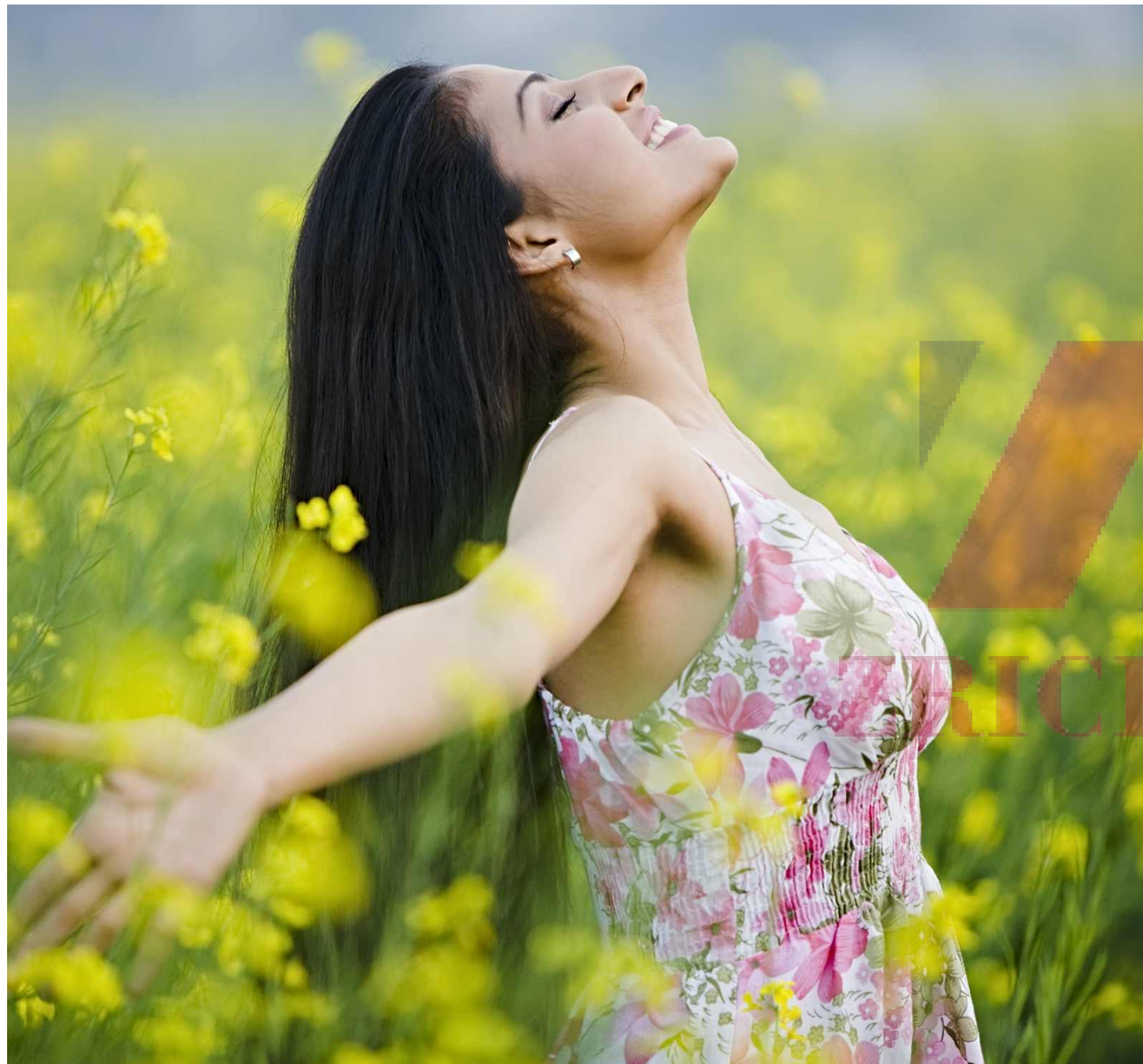


www.Zricks.com



Is it the feeling? Is it the beauty?
Is it the fragrance?
Is it possible to capture the
essence of the exquisite through
mere words?

ROMELL
diva
it's your world



Now, kick-off your shoes, let your hair down,
close your eyes and let your surroundings take over.

Discover the peace and tranquility in the lap of luxury.

Your journey begins here.

A fusion of simplicity and sophistication .

ROMELL
diva
it's your world



ROMELL
diva
it's your world

To the women who tasted success early. Here's a room for ambition.

Diva, a lifestyle apartment devoted to your aspirations. Every apartment here is a pool of fresh ideas moulded into living spaces, especially for you.

There is more.

When you step out of your home, you'll feel its pulse –in recreational hubs and hi-tech facilities around you. Breeze through these pages and you'll agree. Much thought has gone into making your home.

www.Zricks.com



Let the outside beauty lead you to inner contentment

Adding priceless sparkle to your lifestyle experience, Diva is designed to give an unprecedented high to its select few residents, and leave others spellbound.

After all there is so much to admire – luxurious specification and absolutely the best in lifestyle amenities. View the various facets of this exquisite gem and get enchanted!





ROMELL
diva
it's your world

Boundless living space

In keeping with the tradition of extra large living spaces your apartment at DIVA offers open plan living at its best. The stylish design provides light, air and seamless flow within living areas. Apartments feel bigger through better architectural design and innovative interior design with the selection of superior finishes and fittings, you will enjoy a true sense of light, air and space.

www.Zricks.com

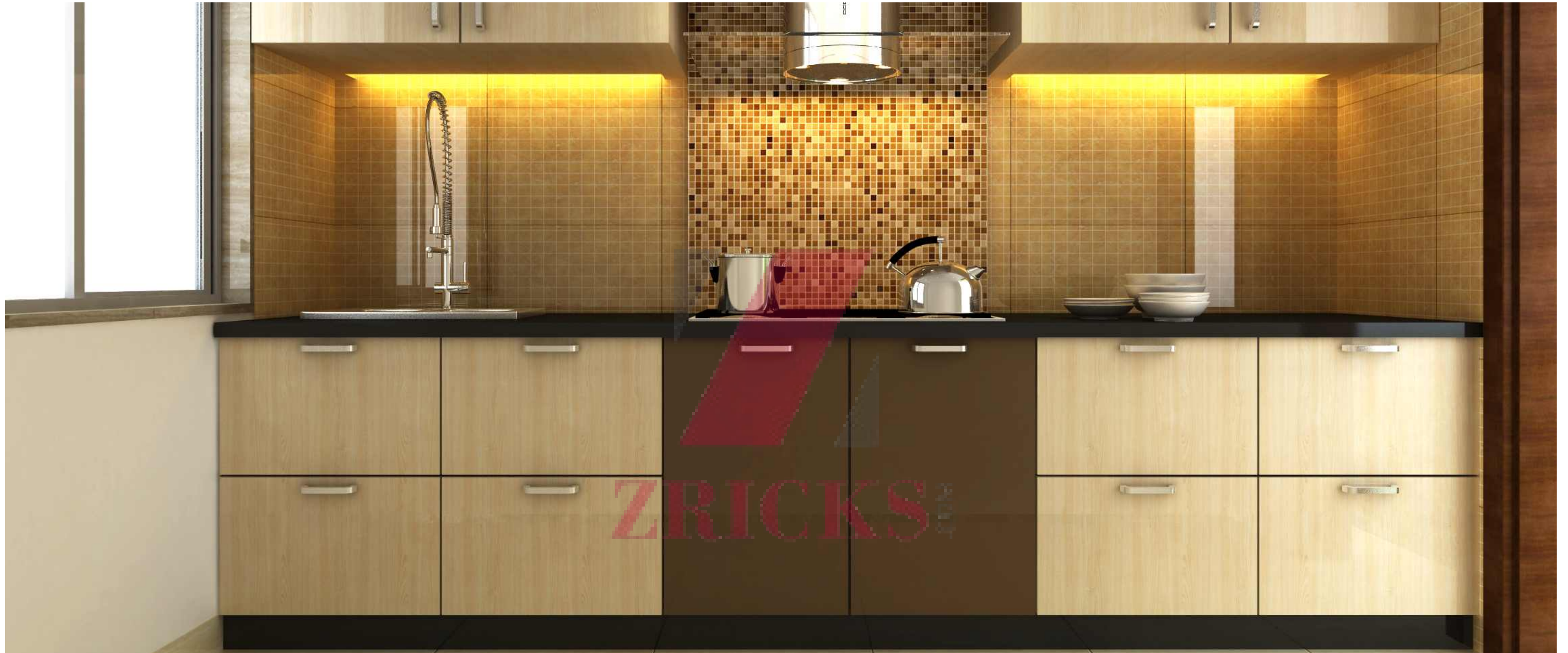


ROMELL
diva
it's your world

It's time for a tête-à-tête
with your own luxury space.

Embodying the highest standards of design, epitomizes the very pinnacle of luxury and aesthetics. A selection of the very best in elegant residences and offering the ultimate in finishes and inclusions – this is true indulgence. Set up high, well above the earth below and the sky above this is the exotic paradise, a place of tranquility and harmony we know as DIVA.

www.Zricks.com



ROMELL
diva
it's your world

Kitchen for the new-age
homemaker

Your home comes with a sleek modular kitchen, built for modern city life. Intelligent utilization of space makes the kitchen a haven of comfort and convenience. It also has a smart steel sink, a hob, chimney and pre-fitted piping for cooking gas. Go ahead, cook up a storm.

www.Zricks.com



ROMELL
diva
it's your world

Tucked away in its own corner
of quietude, yet within close proximity
to life conveniences and pleasures.

Just a stone's throw away at Inorbit Mall, enjoy the convenience of endless array of shopping, dining and entertainment. Located only minutes away from major expressways and stations, ease the access to the commercial and entertainment attractions of the city.

www.Zricks.com



The Diva doesn't just stand out from a distance.
It comes with many privileges to pamper your lifestyle.

External Amenities

- Well designed entrance lobby
- Fully automatic tower parking
- Swimming pool
- Fitness center
- State of the art security system for perimeter surveillance
- Society office
- Security control room
- Provision for piped gas
- Power back up for essential services

Internal Amenities

- Branded vitrified tiles
- Wooden Flooring in Master Bedroom
- Communication system
- Internet and TV points in all rooms
- Granite platform with stainless sink in kitchen
- Fitted modular cabinetry in the kitchen
- Designer dado tiles in bathroom and kitchen

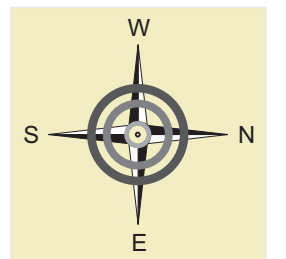


DIVA
Typical Floor Plan



UNIT TYPE :

FLAT NO.	TYPE
1,2,4	2BHK
3	3BHK



Location Map



ISO 9001-2008 Company

Regd. office: Gharkul Co-op. Hsg. Soc., B Wing, Azad Road, Vile Parle East, Mumbai 400 057.
Tel: +91 22 2614 4635, Telefax: +91 22 2610 4635, Mb: 8879789690/91/92, Email: sales@romellgroup.com
Site office: Romell Diva, Off Link Road, Malad (W)
For more information please visit us at www.romellgroup.com

The layout & building plans are subject to change as per discretion of the developers and as approved by the competent authority. The developers reserve the right to make additions, alterations and amendments as they deem fit from time to time. No right of any nature should be construed from this presentation.